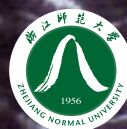


STUDY @ZJNU

NON-DEGREE
UNDERGRADUATE
POSTGRADUATE

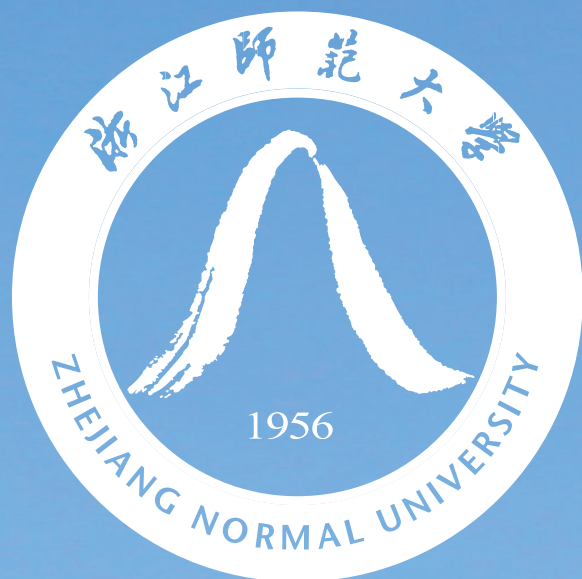
PROGRAMS TAUGHT IN **CHINESE**

2016

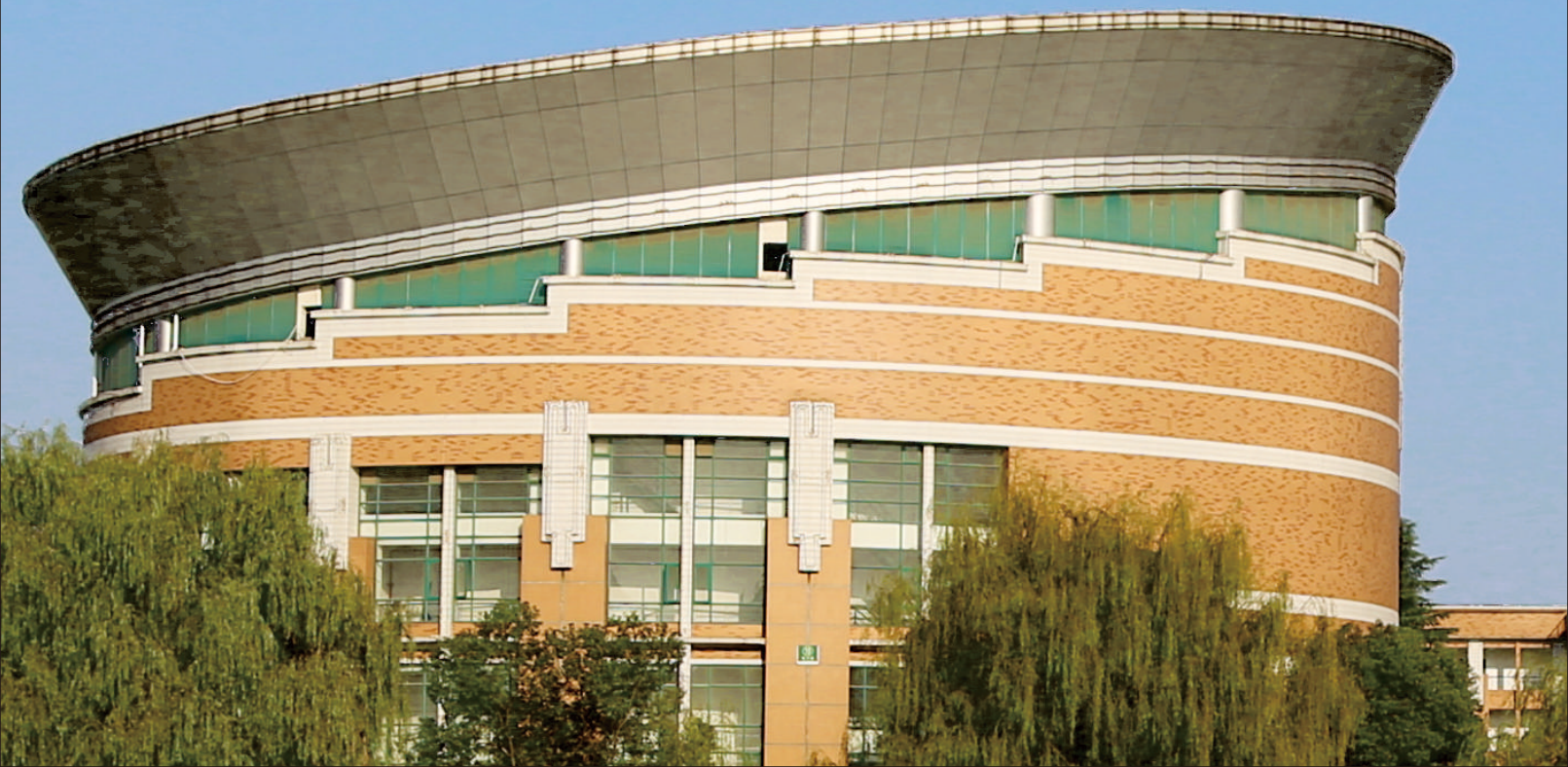


浙江師範大學
ZHEJIANG NORMAL UNIVERSITY

2016/2017
<http://iso.zjnu.edu.cn>

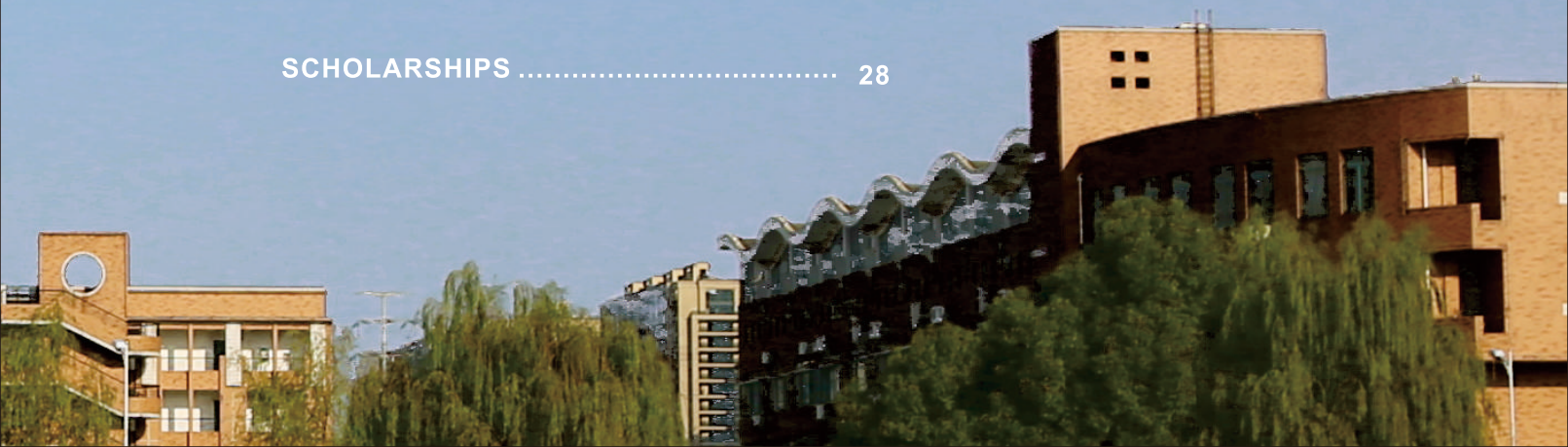


浙江師範大學
ZHEJIANG NORMAL UNIVERSITY



Content

THE UNIVERSITY.....	01
THE CITY.....	02
EXPLORE OTHER SKILLS.....	04
OUTSTANDING STUDENTS.....	06
CAMPUS SCENERY.....	08
CAMPUS LIFE.....	10
RESIDENCE AND CATERING.....	12
PROGRAMME IN CHINESE LANGUAGE...	14
PROGRAMS TAUGHT IN CHINESE.....	16
HOW TO APPLY.....	23
COLLEGE CONTACTS.....	24
FEES.....	26
SCHOLARSHIPS	28



A low-angle photograph of three young adults walking towards the camera on a paved area. On the left, a man in a grey cardigan and khaki pants. In the center, a woman in a blue patterned shirt and black pants. On the right, a man in a grey polo shirt and blue jeans. Behind them is a modern building with a curved, metallic, ribbed roof and large glass windows. The sky is blue with scattered white clouds. A large red graphic of the word 'WHY' with a question mark is overlaid in the center, with the university's name below it.

WHY
ZHEJIANG
NORMAL
UNIVERSITY



The University

Zhejiang Normal University (ZJNU), founded in 1956, is one of the five key universities in Zhejiang Province. According to the Ranking of Chinese University, ZJNU is one of the top 100 universities in China. Chemistry, Materialogy and Engineering are the three top 1% disciplines in the world according to the ESI (Essential Science Index) global ranking. The university covers a total area of more than 200 hectares with well-equipped libraries, laboratories, gymnasiums, entertainment centers, hospitals, supermarkets, etc. The university consists of 19 colleges, and offers 68 undergraduate programs, 151 master's programs and 20 doctoral programs. ZJNU has 2,830 faculty and staff members including 1,570 full-time teachers, and now the university has over 30,000 students including more than 2,000 international students. Its green and beautiful campus furnishes an ideal place for living, study and work.

The university makes strenuous efforts to open up to the outside world. Cooperation of academic exchange has been set up between the university and over 140 foreign universities and institutes in more than 40 countries and regions.



The City

The university is located in one of the four metropolitan areas in Zhejiang Province--**Jinhua-Yiwu Metropolitan areas**.

1 Zhejiang Province

Zhejiang is a coastal province in eastern China. Bordering Shanghai to the north, Zhejiang belongs to the most developed area in China. With the 11th largest population and 1.1% of China's total land area, Zhejiang's GDP ranked 4th in China in 2013. Apart from a bustling economy, Zhejiang is also known for its natural attractions, cultural and historical relics, and a highly pro-business atmosphere.

2 Jinhua City, the site of ZJNU—a national historical and cultural city

Jinhua City is located in the middle of Zhejiang Province and considered one of the 10 most livable cities in China.

This city is dominated by Central Asia tropical monsoon climate with the clear division of four seasons and abundant sunshine. The average annual temperature is 18°C. Its rainy season is from May to June; its coldest and hottest days are seen in January and July respectively.

As one of China's Top Tourist Cities, Jinhua offers a rich variety of natural scenery and artistic attractions. In Jinhua, you can try the local Zhejiang style food or other Chinese cuisine, you can also go to McDonald's, Kentucky Fried Chicken or Pizza restaurants. I guarantee you'll like the beautiful city. It is easy to see how this a suitable city to live, study and travel in.

3. Yiwu City—the world largest international trading market

Yiwu City is well-known internationally for its merchandise wholesale market—Yiwu International Trade City. It hosts about 320,000 varieties of products. They cover about 1502 categories of 34 industries. United Nations, The World Bank and Morgan Stanley have also acknowledged Yiwu as the world's largest wholesale mart of general merchandise.

It takes about half an hour's drive to Yiwu City from Zhejiang Normal University campus and the city is the practice base for international students of various programs of the university.



The Transportation

Jinhua enjoys very convenient transportation with 30 minutes' drive to Yiwu Airport and 40 minutes to Hangzhou and 100 minutes to Shanghai by the High-Speed Rail.

EXPLORE OTHER SKILLS

Isabella
From E. Guinea

"I never thought I'd meet people from so many different countries. I've really met people from all around the world!"



BUILD GLOBAL COM

3

Larson

From Sweden

"I chose zhejiang normal university because i'd like to be an entrepreneur. Zhejiang is the province where I can find many young entrepreneurs that will help me develop my marketing and negotiation skills."



CONNECTIONS

BUILDING YOUR POTENTIAL

BRINGING IDEAS AND DREAMS TO LIFE



“ I fell in love with beautiful China, especially Zhejiang province. Outgoing, I became friendly, in a very short time, i quickly adapted to life here and quickly found out the direction of development in all aspects. I intend to continue to pursue a Ph.D. degree,....which relates to the progress of modern science and technology. ”

Atangana Etogo Christian from Cameroon Yaoundé. He is currently a master student in the department of chemistry and his research field is “reactive chemistry on solid surfaces”. During his study period in China, whether it is learning, research, social practice, cultural or sports activities, he has always showed an outstanding performance. As a result of this hardwork, he has been rewarded as “2015 outstanding foreign student at Zhejiang Normal University ” .



Marco Lovisetto was born in Venice, Italy in 1986. In 2008, he earned his BA in Linguistics and Cultural Mediation at Ca' Foscari University of Venice; in 2012, accomplished his MA in English-Chinese-Italian Translation Studies at his alma mater. After a teaching experience at Dalian Art College from 2009 to 2010, he won a CSC scholarship for his second MA at ZJNU's Translation and Interpreting Department, where he graduated in 2015. Lovisetto is currently a member of ZJNU's foreign faculty teaching at the Translation and Interpreting Department and is pursuing his Ph.D. in translation studies at Soochow University. His major academic interests are: Chinese literature in translation, translation practice, cross-cultural studies, culture and language in contemporary China...



ZJNU it's one of the top 100 universities in china, it has a variety of studies you can choose from and has many international students that I can socialize with.



Flogy Dostov Ngalouo from Congo Brazzaville came to ZJNU to study Digital Media and Technology. As a hardworking soul, he continues to show an outstanding performance. Thus, in 2015 he was rewarded an outstanding foreign student at Zhejiang Normal University in 2015; he also won Special Awards at the 8th China Advertising Art Design Competition for College Students. Everyday, he uses his shooting skills to make university promotional videos, design university prospectus or direct the African Night Event (once a year in December).

“I learn many things here, I grow up here”



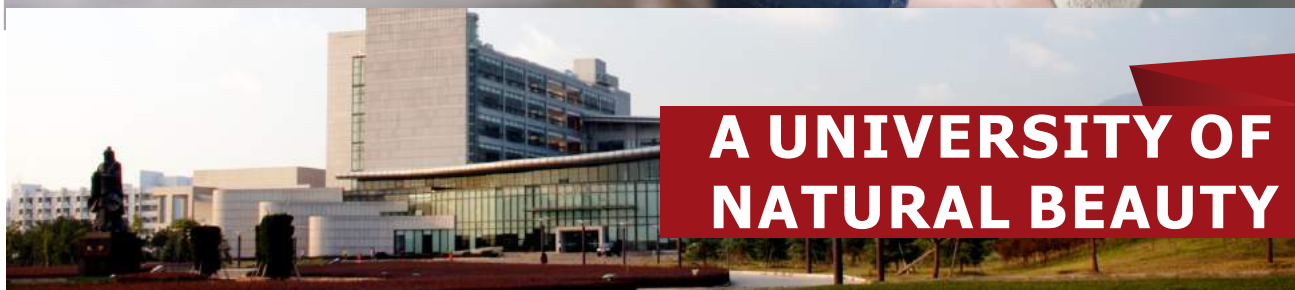
THE PERFECT STUDY

ENVIRONMENT

GET CLOSER TO NATURE



CHUYANG LAKE



**A UNIVERSITY OF
NATURAL BEAUTY**





SWIMMING POOL



SOCCER STADIUM



TENNIS FIELD



CHUYANG LAKE



LIBRARY



ZJNU's beautiful campus is a great place to live. Located on the north side of the city at the foot of the mountains, the campus has three small lakes and several spacious lawns, and it is closed to public traffic. It is spread out but certainly walkable, with plenty of walking paths and quiet places to be found on days with good weather. The west side of campus has the oldest buildings and the tallest trees; the east side was expanded and developed more recently in the 1990s.

In addition to academic facilities, there are outdoor sports facilities all across campus open for public use, including basketball, volleyball, and tennis courts, and two track and field stadiums. Four cafeterias provide plenty of eating options. The campus bus provides easy transportation to the city center, weaving its way through campus and following a loop downtown past the train and bus stations down to People's Square before returning to campus. The campus gets the best of city and country, being far enough out of the way to feel quiet and peaceful but not so far to make downtown Jinhua inaccessible.



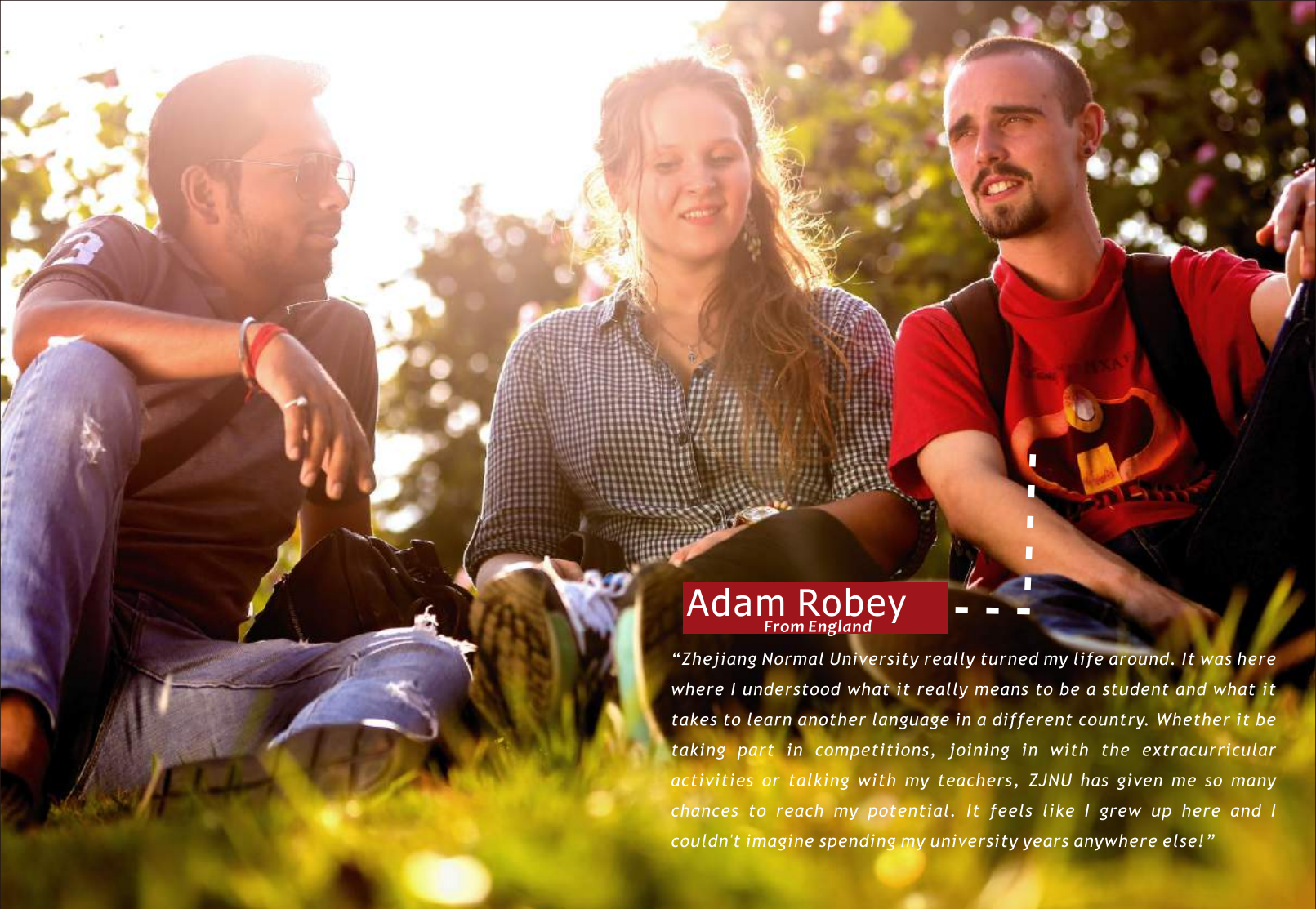
CAMPUS LIFE

A LEARNING
ENVIRONMENT
OF NATURAL
BEAUTY



GYM IN INTERNATIONAL STUDENTS DORMITORY





Adam Robey
From England

"Zhejiang Normal University really turned my life around. It was here where I understood what it really means to be a student and what it takes to learn another language in a different country. Whether it be taking part in competitions, joining in with the extracurricular activities or talking with my teachers, ZJNU has given me so many chances to reach my potential. It feels like I grew up here and I couldn't imagine spending my university years anywhere else!"



**LET YOUR
FUTURE TAKE SHAPE
AT ZJNU**

RESIDENCE

INTERNATIONAL STUDENTS DORMITORY

The international students dormitory is a 7-storey building with elevators.

Rooms are equipped with furniture, air conditioning, bathrooms and internet access.

Kitchens with refrigerators and washing rooms are equipped on every floor.

Double room: 20 RMB per person per night.

Single room: 30-40 RMB per night.



**YOUR FUTURE IS TAKING
SHAPE AT ZJNU AND LIFE
IN THE STUDENT DORMITORY
WILL GIVE YOU
AMAZING EXPERIENCES
THAT GO BEYOND YOUR
CLASSES AND STUDIES.**



GYM IN INTERNATIONAL STUDENTS DORMITORY



HALL OF INTERNATIONAL STUDENTS DORMITORY





Catering

Eating at the students dining hall costs approximately **600 RMB per month.**



GUIYUAN REFECTORY



PROGRAMME IN CHINESE LANGUAGE AND CULTURE

I Long Term Programs:

Students who wish to study Chinese language and culture for over half a year may fit into our beginners programs, elementary programs, intermediate programs or advanced programs in accordance with their levels of the Chinese language proficiency.

Age Requirement: 18 years and above

Fees:

1. Application Fee: 400 RMB
2. Tuition: 7400 RMB per semester (including insurance)

II Short Term Programs:

The University runs short term theme study programs all the year round in Chinese Language and Culture, Chinese Calligraphy and Painting, Business in China, Traditional Chinese Sports Games, Traditional Chinese Musical Instruments, Chinese Education, Tourism in China, etc. The duration for such short term study programs may vary from 2 weeks to 8 weeks, followed by one or two weeks of field trips to major attractions in the Province, or other destinations in China. The courses and duration of study are adjustable upon specific requirements.

Age Requirement: 18 years and above

Fees:

1. Application Fee: 400 RMB
2. Tuition: 800 RMB per week

A photograph of three young women standing in a hallway, smiling and looking at books. The woman on the left has long brown hair and is wearing a grey patterned top. The woman in the middle has dark hair, wears glasses, a black jacket, and a black scarf, and is holding a white bag. The woman on the right has long black hair and is wearing a dark blue top. They are all holding books; the one on the right is holding a book titled 'EDUPRCHINA'. A large red diagonal shape is overlaid on the bottom left of the image.

**This is a university
that will surprise you and charm you,
impress you and engage you**



WHAT DO YOU WANT TO STUDY?

PROGRAMS TAUGHT IN CHINESE

There are many majors, minors and specializations available

UNDERGRADUATE STUDIES

PROGRAMS TAUGHT IN CHINESE

Duration: 4 years

Registration: Early September

Application Deadline: June 20

Entry Requirements:

1. 18 years and above
2. High School Diploma or above
3. HSK Level 3 or above
(except for some special programs)

Fees:

1. Application Fee: 400 RMB
2. Tuition: 16800 RMB per year (including insurance)
(except for some special programs)

PROGRAMMES

College of Mathematics Physics and Information Technology

Mathematics & Applied Mathematics
Physics
Information & Computer Science
Computer Science & Technology
△Software Engineering
Electronic and Information Engineering
Optical Information Science & Engineering
Telecommunications Engineering
Network Engineering

College of Engineering & College of Vocational and Technical Education

Transportation
Machine Design & Manufacturing and Automation
Industrial Design
Auto Maintenance Engineering Education
Education of Applied Electronic Technology
Education of Electromechanical Technology

College of International Culture and Education

International Chinese Education
※Chinese Language
(Business Chinese Direction)

College of Physical Education and Health Sciences

Law
Physical Education
Direction and Administration of Social Sports

College of Economics and Management, China-Africa International Business School

Financial Management
Accounting
Marketing
Finance
Business Administration
International Economics & Trade
Tourism Management

College of Music

Musicology
Dancing

College of Foreign Languages

English
Japanese
Translation (English and Chinese)

College of Chemistry and Life Sciences

Chemistry
Biology
Science Education

College of Law and Political Science

Ideological and Political Education
Social Work
Public Administration

College of Humanities

Chinese Language and Literature
History
Humanistic Education

College of Teacher Education

Primary School Education
Education Technology
Applied Psychology

College of Communication and Creative Culture

Digital Media Arts
○Advertising
Literature of Theatre Film & Television
Culture Industry Management

College of Geography and Environmental Sciences

Geography
☆ Urban and Rural Planning
Environmental Science and Engineering

Hangzhou College of Early Childhood Education

Early Childhood Education
Science of Animated Cartoon
Special Education

College of Fine Arts

Research of Fine Arts
Visual Communication Design
Environmental Design
Product Design

Note:

1. The academic year of the major marked with ☆ is 5 years.
2. The major marked with ※ has no Chinese Language Requirements in admission.
3. The major marked with △ is a Sino-British cooperative program, and the tuition fee is 24,800 RMB/year (including insurance).
4. The major marked with ○ is a Sino-Australia cooperative program, and the tuition fee is 30,400 RMB/year (including insurance).

POSTGRADUATE STUDIES

Research Master's Programs

Duration: 2-3 years

Registration: Early September

Application Deadline: June 20

Entry Requirements:

1. College Diploma or above
2. HSK Level 4 or above

Fees:

1. Application Fee: 400 RMB
2. Tuition: 18800 RMB per year (including insurance)

College	Discipline	Research Orientation
College of Law and Political Science	Civil Law and Commercial Law	Civil Law and Commercial Law
	Sociology	Sociology
		Demography
	Public Administration	Public Administration
College of Teacher Education	Pedagogy	Principles of Education
		Curriculum & Methodology
		History of Education
		Adult Education
	Teacher Education	Teacher Education
	Psychology	Basic Psychological Studies
		Developmental and Educational Psychology
		Applied Psychology
	Education Technology	Education Technology
Educational Economics and Management	Educational Economics and Management	
Hangzhou College of Early Childhood Education	Pedagogy	Early Childhood Education
		Special Education
	Psychology	Developmental and Educational Psychology
		Psychology
College of Physical Education and Health Sciences	Sports Science	Sports Humanistic Sociology
		Human Kinesiology and Science
		Physical Education and Sports Coaching
		Traditional Chinese Sports
College of Humanities	Chinese Language and Literature	Theory of Literature and Art
		Chinese Ancient Literature
		Chinese Modern and Contemporary Literature
		Comparative Literature and World Literature
		Linguistics and Applied Linguistics
		Chinese Philology
		Chinese Classical Text

College	Discipline	Research Orientation
College of Humanities	Children's Literature (Interdisciplinary)	Children's Literature (Interdisciplinary)
	Chinese History	Ancient Chinese History
		Chinese Modern & Contemporary History
		Specialized History Studies
	World History	European and American History
		History of International Relations
		History of Cultural Exchange Between China and Other Countries
College of Foreign Languages	Foreign Languages and Literature s	English Language and Literature
		Translation Studies
		Foreign Linguistics and Applied Linguistics
		Foreign Language Courses and Teachers' Development
College of Music	Musicology and Dancing	Music Theory
		Art and Education of Vocal Acting
		Art and Education of Piano Performing
		Composition and Theories of Composition
College of Fine Arts	Fine Arts	Aesthetics
		Chinese Painting
		Oil Painting
College of Mathematics Physics and Information Technology	Mathematics	Partial Differential Equations
		Function Theory and Functional Analysis
		Combinatorial Mathematics
		Graph Theory and Applications
		Algebra and Number Theory
		The Approximation Theory
		Computation and Software
		Differential Equations and Dynamical Systems
		Optimization Theory
		Computational Biology
		Control Theory and Control Engineering
		Operator Theory and Operator Algebra
	Physics	Nonlinear Physics
		High Energy Physics
		Condensed Matter Theory
		Strongly Correlated System
		Cold Atom and Atomic Physics
		Computer Simulation of Complex Systems
		Functional Material Physics and Devices
		Information Optics
		Spectroscopy and Nonlinear Optics
		Optoelectronic Devices and Sensors
		Acoustic Transducers and Acoustic Signal Processing Devices
		Soft Matter Physics
	Systems Theory	Soliton and Integrable Systems
		Complex Network System

College	Discipline	Research Orientation
College of Mathematics, Physics and Information Technology	Systems Theory	Biological Information Systems Theory
	Statistics	Mathematical Statistics
		Biostatistics
		Economic Statistics
	Physics Electronics	Image and Multimedia Signal Processing
		Sensors and Signal Detection
		Intelligent Information Processing
	Computer Science and Technology	Software Requirements Engineering & Applications
		Artificial Intelligence
		High Trusted Computing & Parallel Computing
		Pattern Recognition and Image Processing
		Algorithm Theory and Application
		Smart Sensing Technology
		System Modeling and Verification of Agent
	Software Engineering	Network security
		Software Engineering Theory
		Software Technology and Applications
	Optics and Optical engineering	Services Engineering Oriented Big Data
		Information Optics
		Laser Spectroscopy and application
		Nonlinear Optics
		Optoelectronic Devices and Sensors
College of Chemistry and Life Sciences	Chemistry	Inorganic Chemistry
		Analytical Chemistry
		Organic Chemistry
		Physical Chemistry
		Polymer Chemistry & Physics
	Biology	Microbiology
		Genetics
		Biochemistry and Molecular Biology
	Ecology	Biodiversity Conservation
		Ecological Security and Repair
		Pollution Ecology
		Development and Utilization of Biological Resources
		Soil Resources and Ecology
		Agricultural Entomology and Pest Control
College of Economics and Management, China-Africa International Business School	Regional Economics	Regional Economics
	Business Administration	Enterprise Management
		Accountancy
		Technical Economics and Management
		Tourism Management
	International Business Management	International Business Management
College of Geography and Environmental Sciences	Geography	Physical Geography
		Human Geography
		Cartography and Geographic Information Systems

College	Discipline	Research Orientation
College of Geography and Environmental Sciences	Geographical Environment and Pollution Control	Geographical Environment and Pollution Control
College of Engineering & College of Vocational and Technical Education	Pedagogy	Educational Studies of Vocational Techniques
	Computer Intelligent Control	Computer Intelligent Control
	Mechanical & Electrical Engineering	Mechanical & Electrical Engineering
	Intelligent Transportation	Intelligent Transportation
College of Communication and Creative Culture	Broadcasting and Television Art	Broadcasting and Television Art
	Folklore	Folklore
College of International Culture and Education	Chinese Language Globalization	Second Language Acquisition
		Teaching Chinese as A Second Language
		Chinese Culture Communication
Institute of African Studies	Politics	International Politics
		International Relations
	Science of Africa (Interdisciplinary)	Education in Africa
	Science of Africa (Interdisciplinary)	African History and Culture
Rural Area Research Center	Rural Development Management	Rural Development Management
Institute of Education Science	Pedagogy	Comparative Education
		Studies of Higher Education

Professional Master's Programs

Master of Teaching Chinese to Speakers of Other Languages (MTC SO) (2 years)

Master of Business Administration (2.5 years)

Master of Social Work (2 years)

Master of Translation (2 years)

Master of Computer Software (2.5 years)

Master of Public Administration (2.5 years)



Doctoral Degree Programs

Duration: 3 years
Registration: Early September
Application Deadline: June 20
Entry Requirements:
 1. Master degree or above
 2. HSK Level 5 or above
Fees:
 1. Application Fee: 400 RMB
 2. Tuition: 22800 RMB per year (including insurance)

Discipline	Research Orientation
Principles of Education	Philosophy of Education
	Principles of Education
Comparative Education	Comparison of International Education Policy
	Research of Education in Africa
Early Childhood Education	Children Development & Early Education
	Children Development & Education Policy
Higher Education	Principles of Higher Education
	Higher Education Management
Linguistics & Applied Linguistics	Syntax Theory
	Applied Linguistics
Chinese Philosophy	Modern Chinese Characters
	Literature of Handwriting on Paper
Study of Chinese Classical Text	The Literature in Pre-Qin & Han Dynasties
	The Literature of Yuan, Ming and Qing Dynasties
Chinese Ancient Literature	Chinese Ancient Literature & Traditional Culture
Chinese Modern & Contemporary Literature	Chinese Contemporary Literary Trends
Fundamental Mathematics	Harmonic Analysis & Its Applications
	Nonlinear Partial Differential Equations
Applied Mathematics	Differential Equations & Dynamical Systems
Operational Research & Cybernetics	Graph Theory
African Education and Social Development	African Education and Social Development

Why Apply Early?

International students should apply as early as possible because they will need to apply for a study permit. Study permit processing times vary by country, sometimes taking up to six months.



Option 1: apply online (<http://iso.zjnu.edu.cn>)

Option 2: apply by email (zjnu@vip.126.com/ admission@zjnu.edu.cn)

Option 3: apply at the Office for International Students, Zhejiang Normal University

HOW TO APPLY

Applying to a degree program involves four basic steps. You should begin the process as early as a year before you wish to attend.



1. Identify a program

ZJNU offers more than 160 programs including undergraduate programs, postgraduate programs, doctoral programs and non-degree programs. See <http://iso.zjnu.edu.cn/> for more information about the programs.



2. Review program requirements and deadlines.

Review your program's specific requirements and contact the department if you have any questions.



3. Apply online

After consultation, you are required to apply online. The application takes 30-40 minutes to complete, and an application fee of 400RMB/70 US dollars is required. See <http://iso.zjnu.edu.cn>



4. Waiting for JW 202 Form and Admission Notice

It may take around 15 days to make the admission documents (Admission Notice and JW 202 Form) ready. If applicants need the hard copies of the admission documents, please provide your mailing address including NAME, CITY, COUNTRY, ADDRESS, POSTAL CODE and PHONE.

COLLEGE CONTACT INFORMATION

College of Humanities



Ms. Sheng
scc@zjnu.cn
+86-579-82298552

College of Law and Political Science



Ms. Chen
ccc@zjnu.cn
+86-579-82298617

College of Teacher Education



Mr. Cheng
185484360@qq.com
+86-579-82282303

College of Vocational and Technical Education



Ms. Zhang
ipo@zjnu.edu.cn
+86-579-82298980

College of Economics and Management, China- Africa International Business School



Ms. Li
lay@zjnu.cn
+86-579-82420173

College of International Culture and Education



Mr. Fu
jhfuture@126.com
+86-579-82298680

College of Chemistry and Life Sciences



Ms. Zhou
zy90@zjnu.edu.cn
+86-579-82282374

College of Mathematics, Physics and Information Engineering



Mr. Qiu
yanghaiq@zjnu.cn
+86-579-82298821

College of Foreign Languages



Mr. Ye
261412430@qq.com
+86-579-82298777

**College of Communication
and Creative Culture**



Mr. Huang
zsdwcwb@163.com
+86-579-82281987

**Institute of International and
Comparative Education**



Ms. Tang
643700279@qq.com
+86-579-82282236

Institute of African Studies



Ms. Shen
hon_shen@zjnu.cn
+86-579-82287076

Institute of Education Science



Mr. Qiao
245876759@qq.com
+86-579-82282520

**Hangzhou College of Early Childhood
Education**



Ms. Xi
284183240@qq.com
+86-571-83508796



TUITION & COST LIVING ESTIMATE

For Degree Students

TUITION FEE	16,800 yuan(BA)/ 18,800 yuan (MA) 22,800yuan (PHD) per year (including insurance fee)
BOOKS	About 800 yuan per year
ACCOMMODATION (SHARED)	About 4,500 yuan per year for Qiming Dormitory or 6,000 yuan per year for International Students Dormitory
WATER AND ELECTRICITY	About 1,500 yuan per year
VISA	About 800 yuan per year
PHYSICAL EXAMINATION	About 400 yuan per year
LIVING EXPENSES	About 10,000 yuan per year

For Language Students

TUITION FEE	About 7,400 yuan per semestre (including insurance fee)
BOOKS	About 800 yuan per year
ACCOMMODATION (SHARED)	About 4,500 yuan per year for Qiming Dormitory or 6,000 yuan per year for International Students Dormitory
WATER AND ELECTRICITY	About 1,500 yuan per year
VISA	About 800 yuan per year
PHYSICAL EXAMINATION	About 400 yuan per year
LIVING EXPENSES	About 10,000 yuan per year



**ALWAYS KEEP
AN OPEN MIND**



浙江师范大学60周年校庆
The 60th Anniversary of Zhejiang Normal University

Have you excelled academically in high school? if yes , then you may be eligible for one more Scholarship. ZJNU rewards excellent achievement by offering undergraduate scholarship to top students. ZJNU is one of only few universities in China with a number of scholarships that are especially for international students.

you may be eligible for scholarships based on your overall academic achievement, as well as your leadership skills and extra-curricular activities.

Scholarship + AWARD

1.Chinese Government Scholarship Website: <http://www.csc.edu.cn>

2.Chinese Government Scholarship in Postgraduate Programs
with the independent recruitment of ZJNU Website: <http://iso.zjnu.edu.cn>

3.Confucius Institute Scholarship Website: <http://www.hanban.edu.cn>

4.Zhejiang Provincial Government Scholarship Website: <http://iso.zjnu.edu.cn>

5.ZJNU Outstanding Student Scholarship Website: <http://iso.zjnu.edu.cn>

ships

S



ACHIEVE YOUR FUTURE



TODAY





1956 — 2016

CONTACT

Office for International Students
Zhejiang Normal University
688 Yingbin Avenue, Jinhua City, Zhejiang Province, 321004, P.R. China
Tel: +86-579-82283155, 82283146
Fax: +86-579-82280337
E-mail: zjnu@vip.126.com; admission@zjnu.edu.cn
Website: <http://iso.zjnu.edu.cn>
March, 2016